

**ATTACHMENT 1**

**YEAR 2002 AIR DISPERSION MODELING ANALYSIS  
OF APFO EMISSIONS**

**DuPont Washington Works Facility  
Parkersburg, West Virginia**

**Prepared by:**

**DuPont Engineering Technology (DuET)  
Environmental Section  
Wilmington, DE 19898**

**October 17, 2003**

**ASH027176**

**EXP015741**

## 1. Introduction

DuPont conducted air dispersion modeling of APFO\* emissions from its Washington Works facility located near Parkersburg, WV. Modeling was conducted to predict long-term ambient air concentrations of APFO resulting from actual plant emissions that occurred during calendar year 2002. This report describes the APFO emissions inventory used in the modeling analysis, the meteorological data, the dispersion model and modeling procedures, prediction locations (receptor grid), and the results of the modeling analysis.

## 2. Emissions Inventory

The following emission inventory information has been assembled in order to conduct the air quality modeling:

1. Stack locations
2. Stack heights
3. Stack diameters
4. Stack gas exit temperatures
5. Stack gas flow rate or exit velocities
6. Detailed plant layout, including all building dimensions
7. Year 2002 estimated actual emissions. These emissions estimates are based upon product information and technical knowledge, including usage factors (quantity of APFO used per pound of dry product), production records, APFO recovery, and available stack test data.

All of the stack parameters are presented in Table 1, which shows the source representation for modeling purposes. The estimated actual emission rates of APFO, per source, are also presented in Table 1. Figure 1 presents the general locations of the APFO sources.

## 3. Meteorological Data

One year of on-site meteorological data for the calendar year 1996 was used in this study. Concurrent twice-daily upper air data from the upper air observation station located in Wilmington, OH was used along with on-site surface temperatures to obtain hourly mixing depths. Missing data and measured wind speeds of less than 1.0 m/s were treated consistent with the recommendations made in the EPA's "Meteorological Monitoring Guidance for Regulatory Modeling Applications"<sup>(1)</sup>. An anemometer height of 10 meters was used for the modeling analysis.

## 4. Model Selection

The area surrounding Washington Works is primarily non-urban. The U. S. EPA procedures classify land use within 3 kilometers of the site by the Auer method<sup>(2)</sup>. Previous review of U. S. Geological Survey (USGS) maps, aerial photographs, and site visits clearly indicated that the area is well over 50%

\* "APFO" means ammonium perfluorooctanoate, and for the purposes of this report includes the anion of the acid perfluorooctanoic acid (PFOA).

non-urban. The Washington Works facility is located within the Ohio River valley, and is surrounded by significant terrain features on both sides of this river valley. As a result, terrain elevations were considered in the modeling analysis.

The Industrial Source Complex Short Term Model (ISCST3) was used as the primary model to estimate long-term pollutant concentrations. ISCST3 is a steady-state Gaussian model recommended by the U.S. EPA. It is included in the "Guideline on Air Quality Models"<sup>(3)</sup>, which is codified as Appendix W to 40 CFR Part 51. It is appropriate for modeling of pollutant emissions from multiple, industrial-type sources subject to significant building downwash. The downwash algorithms in the ISCST3 model provide a representation of the aerodynamic downwash of a stack plume caused by complex building configurations typical of industrial facilities. Refined ISCST3 modeling was conducted using one year (1996) of sequential hourly meteorology from the on-site observation facility, as described above.

## 5. Receptor Selection

A Cartesian grid of receptors was utilized in this modeling analysis. This grid consisted of the following:

- Fenceline receptors with a 100 m spacing between receptors
- Receptors beyond the fenceline with 100 m spacing on a 5 km by 7 km grid

All receptors are located along or outside the plant fenceline.

A Cartesian receptor grid of this type is considerably more dense than recommended by the U.S. EPA in the Guidelines on Air Quality Models for modeling a facility of this type. Terrain elevations for each of the receptors were imported from electronic files obtained from the U. S. Geological Survey (USGS) using the "highest" method to assign an elevation to each receptor. The receptor grid used in the modeling analysis is shown graphically in Figure 2.

## 6. Modeling Procedures

The most recent version of ISCST3 (version 02035) was used in the air quality dispersion modeling of all receptors. All model options were set to the U.S. EPA regulatory default version of ISCST3. The model was run in the rural mode since the land area in the immediate vicinity of Washington Works is more than 50% rural. Any effects of aerodynamic downwash caused by structures adjacent to the modeled stack were included in the ISCST3 modeling analysis along with a summary of the building downwash input files (BPIP). Air quality dispersion modeling was conducted on an hour-by-hour basis using the one year of meteorological data described above. The APFO modeling results were summarized for the annual averaging time period.

## 7. Results

The results of the modeling analysis indicate a maximum predicted annual average APFO concentration of  $1.36 \text{ ug/m}^3$ . This maximum is located along the northern property fenceline, along the Ohio River, at UTM 442043 E, 4346883 N. The maximum predicted APFO concentration in an area where people may reside is  $0.39 \text{ ug/m}^3$ . This prediction is located at UTM 442600 E, 4347600 N, on the Ohio side of the river. The results are presented graphically in Figure 3.

Table 1

\*\*\* POINT SOURCE DATA \*\*\*

SOURCE ID	X (METERS)	Y (METERS)	BASE ELEV. (feet)	Emission Rate (lb/hr)	STACK HEIGHT (feet)	STACK TEMP. (DEG.F)	STACK EXIT VEL. (ft/sec)	STACK DIAMETER (feet)
CEH 242	441954	4346741	659.4	0.1047	114.5	200.0	106.1	0.50
TIM 662	442025	4346847	636.5	0	149.9	172.0	40.2	1.33
TIE&TIF 699	442091	4346836	639.8	0.1019	170.0	124.0	27.9	4.00
CFS 274	441787	4346744	658.2	0.3424	109.9	254.9	44.6	0.69
RO22EEF86	442069	4346627	629.9	0.000034	48.9	80.0	40.0	2.00
RO22EEF89	442063	4346635	629.9	0.000068	48.9	80.0	20.0	2.00
TIF 644	442084	4346835	639.8	0.4397	59.1	110.9	169.8	1.50
THI 652	441920	4346767	649.6	0.0037	69.9	200.0	54.1	1.98
CDB 216	441980	4346788	659.4	0	60.0	158.1	34.5	1.30
RO22EEF8	442086	4346824	623.4	0.0014	48.9	80.0	30.0	2.50
RO22EEF87	442058	4346634	629.9	0.00034	48.9	80.0	10.0	2.00
THG 658	441923	4346756	649.6	0.0067	67.9	299.9	22.4	1.63
CFK 268	441774	4346763	643.0	0.0071	72.5	110.0	29.1	0.27
C1CA-D 205	442310	4346800	655.2	0	6.7	70.0	84.9	0.50
CDT 231	441953	4346766	659.4	0.3622	81.0	130.0	28.4	0.67
CDW 232	441952	4346776	659.4	0.2626	93.2	130.0	23.6	0.67
TIV 697	442129	4346836	656.0	0.0049	45.0	66.0	15.2	1.67
TIF 694	442104	4346822	656.0	9.50E-03	45.0	66.0	15.2	1.67
TIE 647	442125	4346818	656.0	0.0033	69.0	230.0	57.0	1.67
TIF 648	442109	4346806	656.0	0.0024	69.0	230.0	57.0	1.67

ASH027179

EXP015744

### Figure 1

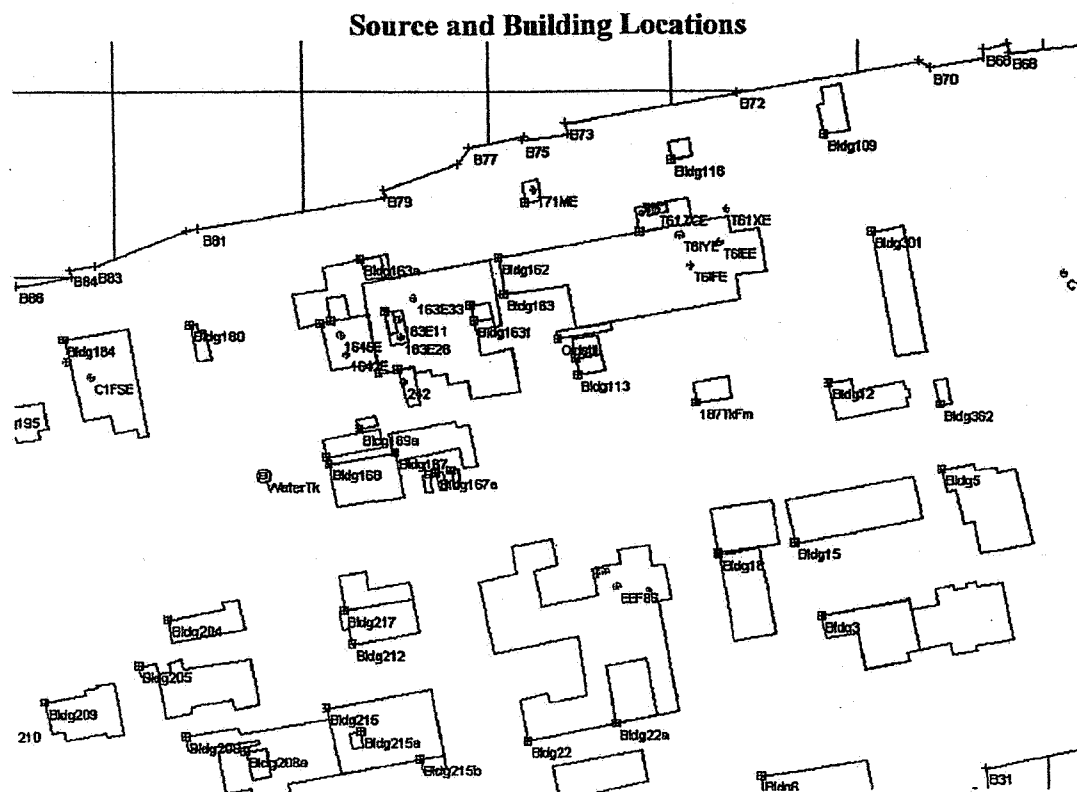
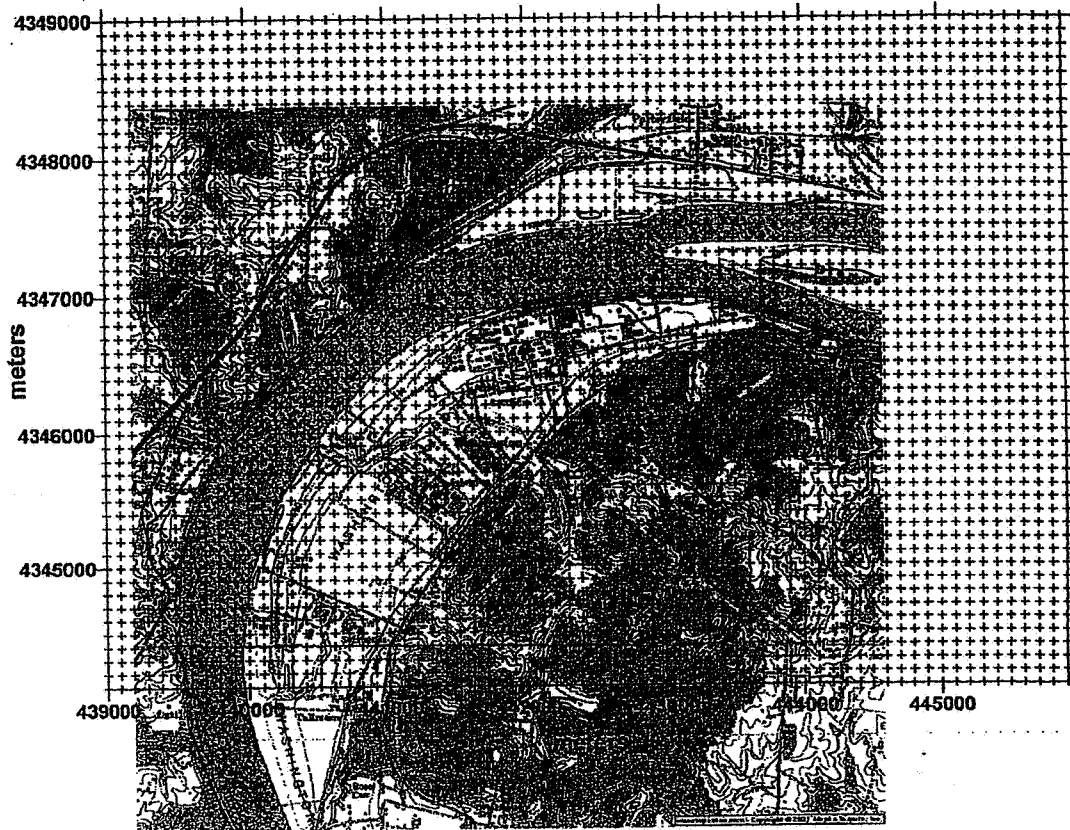


Figure 2

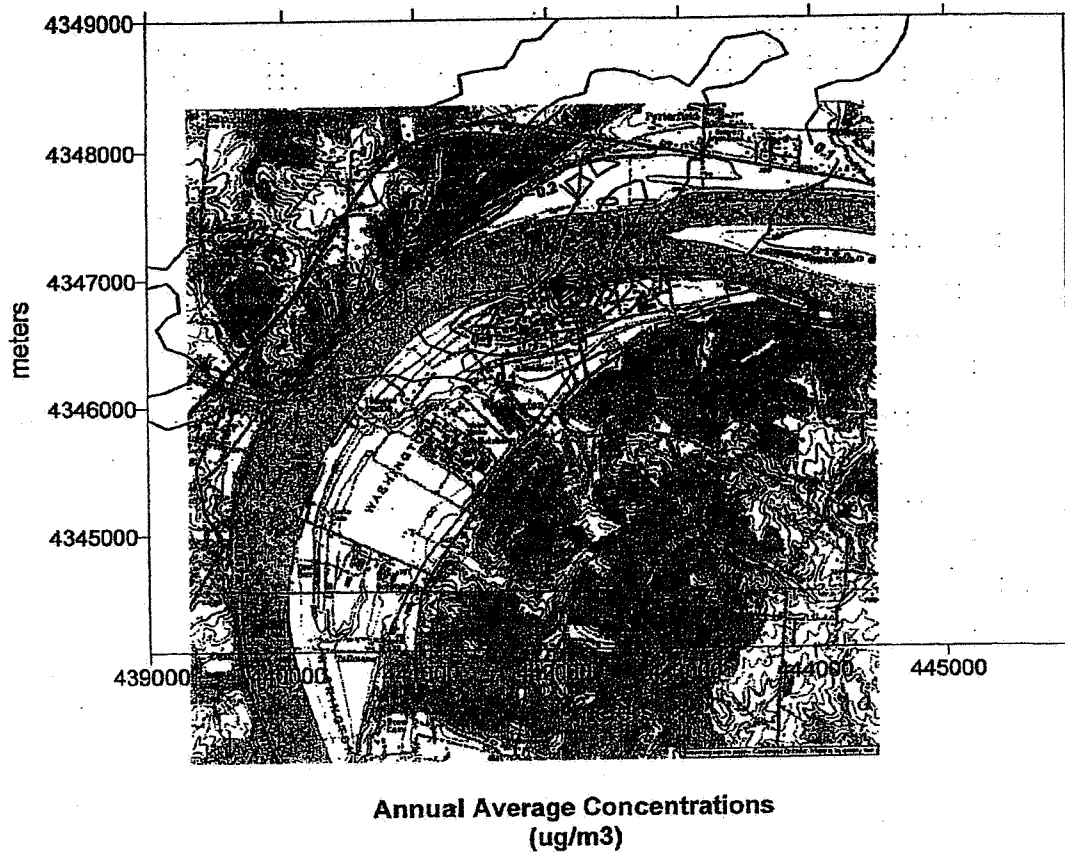
Receptor Grid Used in the Modeling Analysis



ASH027181

EXP015746

**Figure 3**  
**APFO 2002 Modeled Emissions**



Contour Interval 0.1 ug/m3

ASH027182

EXP015747

## References

- (1) U. S. EPA, Meteorological Monitoring Guidance for Regulatory Modeling Applications, EPA-454/R-99-005, Office of Air Quality Planning and Standards, February, 2000.
- (2) Auer, A. H., "Correlation of Land Use Cover with Meteorological Anomalies", *Journal of Applied Meteorology*, Vol. 17, pp. 636-643, 1978.
- (3) U. S. EPA, Guideline on Air Quality Models (Revised), EPA-450/2-78-027R-C, 2001.

ASH027183

EXP015748